

# Evolve Contract Solutions

Your One-stop shop for  
Integrated Services



**ECS**  
Evolve Contract Solutions



### 03. about us

We have over 20 years of experience in the waste and facilities sector. Our experience allows us to tailor a full FM package to our customers, taking the hassle out of looking for reliable service providers.

### 04. accreditations

Evolve Waste Management are now ISO 9001 and ISO 14001 accredited.

### 05. reporting SLAs

At the outset of any job we will set out a Service Level Agreement with you.

### 07. our services

#### Waste

- |                                |                         |
|--------------------------------|-------------------------|
| 07. Waste and Recycling        | 11. Refuse derived fuel |
| 07. Recycling                  | 12. Anaerobic digestion |
| 09. Food and glass collections | 14. Equipment           |
| 10. Skips                      | 15. Hazardous Waste     |
| 10. Clearances                 |                         |

#### Facilities Management Services

- |                         |                          |
|-------------------------|--------------------------|
| 17. Contract Cleaning   | 21. Jet Washing          |
| 19. Window Cleaning     | 22. Reactive Maintenance |
| 20. Grounds Maintenance |                          |

### 23. testimonials

See what our customers have to say about the service we offer and how we build strong and successful relationships with them.





# about us

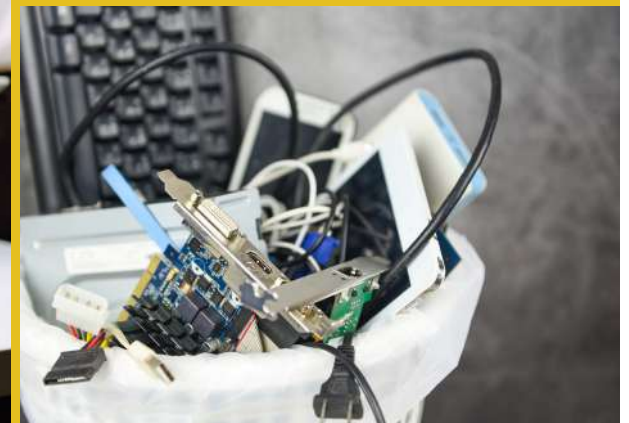
Evolve Contract Solutions, incorporating Evolve Waste Management, provide everything you need for waste management and facilities management from one point of contact.

We offer a national service through our network of like-minded suppliers. Our main aim is to deliver an excellent service while focusing on your environmental impact.

If you need collections at a specific time of day, NOT A PROBLEM! One of our partners will be able to accommodate your needs, just tell us your requirement and we'll do the rest.

Our contract solutions take the hassle out of looking for a reliable service provider. If you can't find the service you're looking for, don't worry, just ask and we'll be more than happy to find you a provider from our wide range of suppliers.

Why not give us a call on **0333 242 2282** and a member of our team will arrange a site visit.





# accreditations



## **Evolve Waste Management are now ISO 9001 and ISO 14001 accredited.**

ISO 9001 is the world's most recognised quality management system standard and has been adopted by over 1 million organisations worldwide.

We use this to help improve our business by monitoring, managing and improving the quality of our products and services.

The ISO 14001 sets the standard for Environmental Management Systems. Designed to help businesses reduce their environmental impact.

We are now able to reduce our waste management costs, improve our resource efficiency, and easily comply with all environmental laws and regulations.

With these accreditations, we are now able to help you and your business improve your waste management costs and comply with the everchanging environmental laws and regulations.

View our ISO certificate [HERE](#)



Alcumus SafeContractor is the leading Health and Safety Accreditation.

We have achieved this following an assessment of our health & safety documentation which has been compared against the SafeContractor Charter Standards.

Our business now meets the necessary requirements around health and safety, equal opportunities, diversity and environmental management practices.

View our Certificate of Accreditation [HERE](#)



# reporting SLAs





At the outset of any job we will set out a Service Level Agreement with you. As the job commences you will have access to a full reporting suite to allow you to keep up to date with our progress. This will contain details including:

- ▶ Latest News
- ▶ Invoicing
- ▶ Details of collections
- ▶ Items recovered and recycled
- ▶ Any issues raised
- ▶ Supporting documentation

It will also allow you to raise any new issues plus track progress and resolution relating to previous points raised. Thus providing you with transparent updates through every stage of the job.

			Quantity	Weight	Cost/Rate,£	Transport & price,£	Landfill %	Recovered %	Recycled %	Am (T)
Evolve Contract Solutions Ltd	Biodegradable kitchen and garden waste	240 (Wheelie Bin)	T	44	0.000	242.00	0			
	General Waste	660 (Wheelie Bin)	T	96	2.815	675.75	0	0.00%	80.00%	10.00%
	Glass IN	240 (Wheelie Bin)	T	37	0.000	255.15	0	0.00%	100.00%	10.00%
	Paper and cardboard	660 (Wheelie Bin)	T	44	0.270	220.40	0	0.00%	63.47%	16.92%
Total for tonnes				181	3.070	1198.30	0	0.00%	61.47%	16.53%
Total for tonnes				181	3.070	1198.30	0	0.00%	61.47%	16.53%



# our services



## ● Waste Collections

We encourage our customers to separate their waste on-site. One of our team will be happy to help by advising you on the correct containers, and any signage or internal bins you might need to make it easier for your staff to separate your waste. We have a number of options and sizes available depending on the size of your business and the volume of waste you might produce.



## ● Recycling Collections

We offer innovative waste solutions, tailored to customer requirements that are cost-effective, waste minimising and recycling-led. By conducting a free, on-site waste audit, we will determine your exact requirements and deliver a solution that is bespoke to your business and location. We offer mixed and single stream collections for all types of business waste.





### 60 Litre Internal Bins



**H: 0.63 W: 0.51 D: 0.28**

General waste, dry mixed recycling,  
single waste stream recycling,  
including:  
paper, card & plastic

### 240 Litre Wheeled Bin



**H: 1.10 W: 0.58 D: 0.74**

General waste, dry mixed recycling,  
single waste stream recycling,  
including:  
paper, card, plastic, food & glass

### 360 Litre Wheeled Bin



**H: 1.10 W: 0.60 D: 0.87**

General waste, dry mixed recycling,  
single waste stream recycling,  
including:  
paper, card & plastic

### 660 Litre Wheeled Bin



**H: 1.24 W: 1.22 D: 0.77**

General waste, dry mixed recycling,  
single waste stream recycling,  
including:  
paper, card & plastic

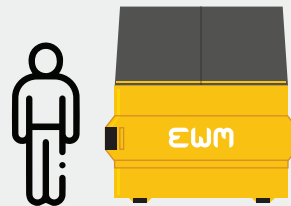
### XX Litre Wheeled Bin



**H: 1.35 W: 1.25 D: 1.06**

General waste, dry mixed recycling,  
single waste stream recycling,  
including:  
paper, card & plastic

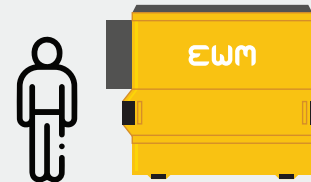
### 8 Cu. Yd. FEL



**H: 2.16 W: 2.06 D: 2.16**

General waste, dry mixed recycling,  
single waste stream recycling,  
including:  
paper, card & plastic

### 10 Cu. Yd. FEL



**H: 2.10 W: 2.10 D: 2.10**

General waste, dry mixed recycling,  
single waste stream recycling,  
including:  
paper, card & plastic

### 35 Cu. Yd. Roll-On Roll-Off



**H: 2.45 W: 1.25 D: 1.06**

General waste, dry mixed recycling,  
single waste stream recycling,  
including:  
paper, card & plastic

**(Please ask for other sizes)**





## ● Glass Collections

Sending glass to general waste is expensive and should be avoided. Glass that goes into general waste increases the weight of your bins and you will incur high overweight charges.

We collect your glass in separate 240 or 360 litre bins and take it directly to a recycling facility. Glass is the only resource that can be recycled 100% of the time as it doesn't degrade as it goes through the recycling process. Depending on your needs, we will provide you with the number of containers needed for your site. A dedicated vehicle will collect your glass on your allocated collection day.



## ● Food Collections

This year, the government will be implementing stricter legislation which will introduce mandatory separate food waste collections, with a targeted 75% recycling rate by 2030. We offer our customers separate waste food collections. This helps reduce overweight charges, reduces odours, reduces pests and increases your recycling rates. Your food waste will be separated internally using small food caddies and once full, these caddies will be taken outside to your external bins ready for collection. Your food waste will then be collected by one of our dedicated food collection vehicles, which will take the waste to an AD (Anaerobic Digester) facility. Your food will then be turned into fertiliser that will be sent to the local farms for land spreading. The energy created will be diverted back to the national grid to power local communities.







## ● Skips

Are you having some building work done or a clear out of a garage or office and need a container leaving on-site? Then a skip is what you need. Skips come in various sizes starting from a 2-yard to a 40-yard and on most occasions can be delivered to your premises the very next day. Your standard building skip from 2 yards to 8 yards comes at a fixed cost, making it easier to budget for your DIY building projects. If you're looking for something bigger, then one of our 20 to 40 containers is a good option, they are priced to include transport and tonnage. All skips are taken to a recycling facility for processing.

### Maxi Skip Hire



### Roll-on Roll-off Skip Hire



### Midi Skip Hire

### Jumbo Skip Hire

### Enclosed Skip Hire



## ● One-off Waste Clearances

**Haven't got time to fill a skip? Why not leave it to us? We offer a quick and efficient "man in van" clearance service that provides a cost-effective and recycling-led alternative to skips, which includes labour.**

Evolve Waste Management offers its customers a quick, efficient and hassle-free 'man in van' waste removal service. Our fleet of vehicles allows us the flexibility to provide the most cost-efficient solution to removing problem waste items from your commercial or residential premises. Our service includes the loading of waste into the vehicle, and transporting it to a depot for segregation and recycling. More importantly, ensuring your peace of mind that a compliant disposal service has been provided.

We can move most items and our services are provided to all business sectors including retail, offices, shops, schools and warehousing.







## Refuse Derived Fuel

We endeavour to offer our customers 100% diversion from landfill by sending our general waste to a Refuse Derived Fuel (RDF) production facility.





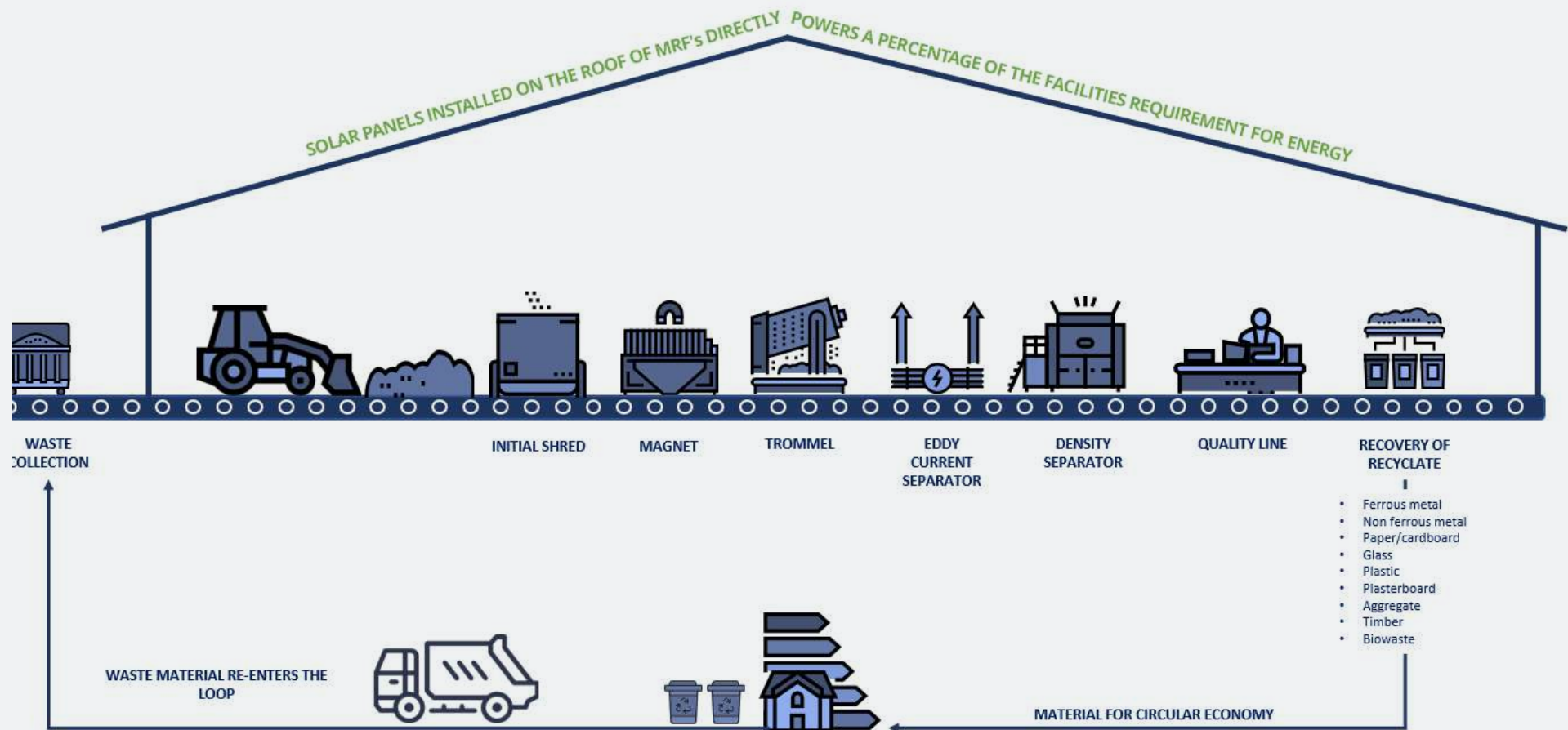
# Anaerobic Digestion

Your food waste will be collected by one of our dedicated food collection vehicles, which will take the waste to an AD (Anaerobic Digester) facility. Your food will then be turned into fertiliser that will be sent to the local farms for land spreading. The energy created will be diverted back to the national grid to power local communities.



# What happens with your waste?

## Dry Mixed Recycling [DMR] Process







## Equipment

Our specialist team can make recommendations for equipment to suit any budget and are on hand to train your employees, from how to use the machine to how to minimise waste and maximise productivity. You can either purchase outright, or lease equipment from us and we'll provide the guarantee, maintenance package and peace of mind.

# Balers.

### Mill Size Baler (ET-V63)



#### FEATURES/BENEFITS

- ▶ Full Safety electrical interlocks on doors
- ▶ Auto Loading door opening on return ram cycle
- ▶ Key operated controls
- ▶ Low 24-volt operator control panel
- ▶ Fully Auto press ram cycle
- ▶ Dual control bale eject system
- ▶ Bale full indicator
- ▶ Material retention claws
- ▶ Bale wire guidance system
- ▶ Lifetime structural warranty
- ▶ CE Compliant

#### OPTIONS

- ▶ High speed cycle (regenerative hydraulics)
- ▶ Customer Signage

### Twin Baler (ET-V200)



#### FEATURES/BENEFITS

- ▶ Produces a Euro pallet size bale
- ▶ Multi chambers will allow you to separate and recycle different materials
- ▶ Roller guided head for ease of movement
- ▶ Saves handling time as you're free to load one chamber whilst the other compacts
- ▶ Retaining claws to prevent material spring back
- ▶ Up to six additional chambers can be added
- ▶ Fully automated bale ejector simplifies the removal of the bale
- ▶ A simple, easy to use system
- ▶ CE Compliant





## ● Hazardous Waste



## ● Chemical Waste

Hazardous waste comes from several different processes and different forms; getting it wrong can be costly to your business. Our specialist team helps customers safely store, transport and remove all kinds of hazardous waste.



## ● Waste Electrical and Electronic Equipment (WEEE)

In a world of ever increasing man-made pressure on the environment, we all have a duty to help the process of saving the planet's resources. Recycling your Waste Electrical and Electronic Equipment (WEEE) is an essential part of that process and that is why we have developed a simple system, using our unique POD range.

Our Recycling POD range is a compact, space saving solution for storing electronic equipment including data bearing items. PODs are stackable so total asset management is easily achieved.

The Waste Electrical and Electronic Equipment (WEEE) Regulations Act 2013 places a legal Duty of Care on all businesses to store, transport and dispose of their electrical waste in a compliant manner.

We offer a range of services from non-hazardous to hazardous WEEE collections on various container sizes.





## ● Washrooms

**Our affordable washroom and hygiene solutions are the perfect addition to your waste and recycling service.**

When it comes to running a business it's important that the customer is happy with all levels of service they receive. Keeping your washroom facilities clean and tidy can take time and effort if you don't get it right. We provide a full range of washroom services including hand dryers, soap dispensers, feminine hygiene bins, nappy bins, mats and many other items on request.

# Our **specialist team** helps customers to safely store, transport and remove all kinds of **hazardous waste**



### SANITARY BIN SOLUTIONS

Sanitary bins are classified in the UK as 'offensive waste' and therefore special consideration is taken into how the waste is stored, handled and disposed of. We provide an exchange service, taking away the used bin and leaving a clean one in its place.



### HAND DRYERS

Whether you need your hand dryers to be quick, energy efficient, quiet or hygienically clean with filtered air, we have you covered. Choose from chrome, black or white. All our hand dryers are installed by professionals and leased to you to include maintenance and servicing.



### AIR FRESHENERS & SOAP DISPENSERS

We provide a range of air freshening units from small, compact units which disperse a regular, measured dose of aerosolised fragrance into the air, to larger atomising units which use essential oils. We will install and maintain the units for the lifetime of the contract.



# facilities management services



## ● Evolve Contract Cleaning

We are a professional cleaning company that specialises in providing high-quality contract cleaning services to businesses and commercial properties. Our team of experienced cleaners are dedicated to delivering the highest standards of cleanliness, making sure that your premises look their best at all times.



## ● How We Manage Your Contract

At Evolve Contract Cleaning, we take contract management seriously. We understand that maintaining a clean and hygienic environment is important to the success of your business, and we are committed to providing a contract cleaning service that exceeds your expectations.







## ● Providing Cleaning Products

In addition to our contract cleaning services, we also provide cleaning products to our clients. Our cleaning products are of the highest quality and are specifically chosen for their effectiveness and safety.



## ● Reporting and Resolving Issues

At our company, we take pride in providing high-quality contract cleaning services, and we are committed to ensuring that our clients are satisfied with the work we do. However, we understand that there may be times when the cleaning standards do not meet expectations.





## ● Window Cleaning

Having dirty windows can be an eye-sore for any business. It's a big job, and it can be tedious, time consuming, and frustrating. That's why we can do it for you.

Keeping your business clean and tidy on the outside can leave a great first impression for any visitors and potential clients. We are here to help and can offer your business premises an external window clean. We have a wealth of experience in cleaning windows, doors, fascias, and gutters.

Whether you are looking for a commercial Window Clean as a one-off or a regular clean, we can help. We will attend your property and carry out a full clean based on your unique requirements.





## ● Ground Maintenance

Having neglected grounds outside your business can be quite an eye-sore for any visitors. Keeping your grounds clean and tidy is a big job, and it can be quite tedious. That's why we can do it for you.

We offer state-of-the-art grounds maintenance services that support your specific needs.



**With our extensive knowledge and experience, we can help you with the following services:**

- Grass cutting and mowing
- Hedge cutting and maintenance
- Tree works
- Weed control/invasive weed management
- Litter picking
- Pothole repair





## Jet Washing

### Bin and steam cleaning

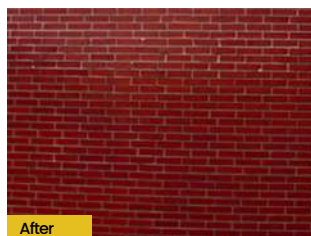
Having your bins and the waste area cleaned on a regular basis can help avoid maggots, odours and vermin. We offer a chemical-free and eco-friendly cleaning service. All water is provided and removed from the site for compliant disposal.

If it's a one-off bin clean or one of our regular services, we've got you covered. Our team will attend the site on the scheduled date after your waste collections and steam clean your bins leaving them looking and smelling like new.

Waste, food, grease, and dirt can also build up around the waste compound increasing the likelihood of attracting unwanted pests. Let us keep your business premises not just clear of waste but also sanitised, clean and tidy using our mobile cleaning service.



Before



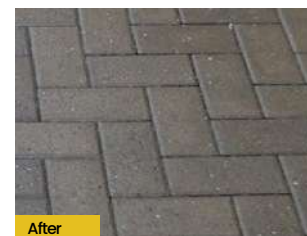
After

## GRAFFITI

Our professional graffiti removal service returns surfaces to their original state. We can also provide an anti-graffiti coating to help discourage further attacks and make future removal easier.



Before

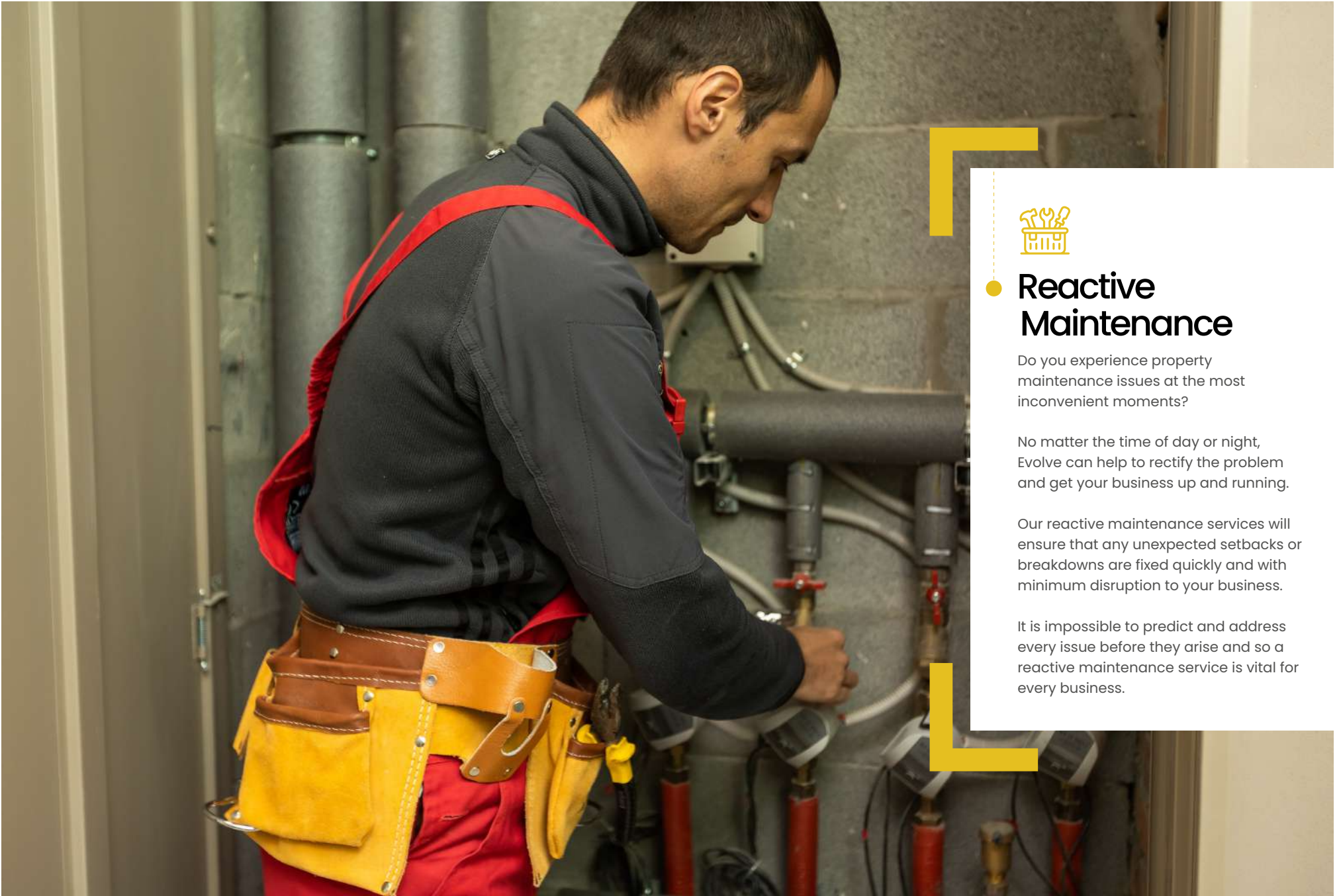


After

## CHEWING GUM REMOVAL

Van-mounted pressure washers provide instantaneous hot water at high pressure to remove chewing gum and other unsightly vandalism.





## Reactive Maintenance

Do you experience property maintenance issues at the most inconvenient moments?

No matter the time of day or night, Evolve can help to rectify the problem and get your business up and running.

Our reactive maintenance services will ensure that any unexpected setbacks or breakdowns are fixed quickly and with minimum disruption to your business.

It is impossible to predict and address every issue before they arise and so a reactive maintenance service is vital for every business.





# testimonials

See what our customers have to say about the service we offer and how we build strong and successful relationship with them.



**Joe Havey**

**Achieve More Training**

As a small business we really value the power of word of mouth. So, when Evolve were recommended by a trusted client of ours I felt confident we would get the service we wanted. From the first meeting to every service provided since our customer experience can only be described as first class. From the personal care taken by the team to really get to know us, and understand what we need. To the quality of communication whether it be one of our Directors calling or an Apprentice, the feedback is always the same, they listen and help sort out the problem. In a nutshell, Evolve are easy to work with, professional, reliable and we value them extremely highly



**Phil Cook**


**Oculus Facilities Management**

Our incumbent suppliers were not meeting our expectations, after meeting with Evolve and discussing our requirements for waste, we had no hesitation in switching. Evolve were able to react quickly to my request and had services on site the following day, their friendly staff are always available for advice on waste requirements and are very efficient in responding to enquiries. I would recommend switching your waste services to Evolve and allow them to make recommendations based on their extensive experience.







 0333 242 2282

 [info@evolvecontractsolutions.co.uk](mailto:info@evolvecontractsolutions.co.uk)

 Unit 15c Yardley Road, Knowsley Industrial Estate, Knowsley, Liverpool, L33 7SS.